

DRAWING NUMBER  
26-104

DRAWING NUMBER

DRAWING NUMBER

DRAWING NUMBER

# PLAT NO. 9 OF LAKE OSBORNE ESTATES

IN SECTION 33, TWP. 44 S., RGE. 43 E.  
PALM BEACH COUNTY, FLORIDA

18  
4333

104

STATE OF FLORIDA  
COUNTY OF PALM BEACH  
This Plat was filed for record at 8:37 AM  
this 14 day of October  
1959 and duly recorded in Plat Book No  
36 on page 104  
J. ALEX ARNETTE, Clerk, Circuit Court  
By M. Blackburn, D. C.

STATE OF FLORIDA  
COUNTY OF PALM BEACH  
KNOW ALL MEN BY THESE PRESENTS, that LAKE OSBORNE LAND CO., a Corporation organized and existing under the laws of the State of Florida, the owner of tract of land lying and being in Section 33, Township 44 South, Range 43 East, Palm Beach County, Florida, shown hereon as PLAT NO. 9 OF LAKE OSBORNE ESTATES, and more particularly described as follows, to wit:

Beginning at the southeast corner of Lot 10, Block 19, Plat No. 6, Lake Osborne Estates, recorded in Plat Book 25, Page 45, Public Records of Palm Beach County, Florida, said corner being a point in the south line of the Northwest Quarter (NW 1/4) of the Southwest Quarter (SW 1/4) of said Section 33; thence easterly along said south line, a distance of 396.24 feet, more or less, to a point in the westerly right of way line of the Seaboard Air Line Railroad; thence northerly along said westerly right of way line, a distance of 1335.20 feet, more or less, to a point in the east-west Quarter Section Line of said Section 33; thence westerly along said Quarter Section Line, a distance of 141.10 feet to a point in a curve concave to the southwest having a radius of 245.11 feet and a central angle of 88°32'00"; thence southerly along the arc of said curve, a distance of 22.90 feet to the end of said curve; thence westerly along a line radial to said curve, a distance of 165 feet; thence southerly at right angles to the preceding course, a distance of 33.08 feet, more or less, to the northeasterly corner of Lot 14, Block 24, Plat No. 7 of Lake Osborne Estates, recorded in Plat Book 25, Page 109, Public Records of Palm Beach County, Florida; thence southerly along the easterly boundaries of said Plat No. 7 and Plat No. 6 to the point of beginning.

has caused the same to be surveyed and platted as shown hereon, and does hereby dedicate to the perpetual use of the public, as public highways, the Streets shown hereon, and the use of the Easements for the construction and maintenance of Public Utilities.

IN WITNESS WHEREOF, the said Corporation has caused these presents to be signed by its President and attested by its Secretary, and its corporate seal to be affixed hereto, by and with the authority of its Board of Directors, this 21<sup>st</sup> day of September, A.D. 1959.

LAKE OSBORNE LAND CO.

Attest: Shirley Biers Secretary By Irving Biers President

STATE OF FLORIDA  
COUNTY OF PALM BEACH  
I HEREBY CERTIFY that on this day personally appeared before me, an officer duly authorized to administer oaths and take acknowledgments, IRVING BIERS and SHIRLEY BIERS, President and Secretary, respectively, of LAKE OSBORNE LAND CO., a Corporation, to me well known and known to me to be the individuals described in, and who executed the foregoing dedication, and they acknowledged before me that they executed the same as such officers of said Corporation, by and with the authority of its Board of Directors, for the purposes therein expressed, and that their act and deed was the act and deed of said Corporation.  
WITNESS my hand and official seal at West Palm Beach, County of Palm Beach and State of Florida, this 21<sup>st</sup> day of September, A.D. 1959.

John J. Thomas  
Notary Public

My Commission expires: August 7, 1961

STATE OF FLORIDA  
COUNTY OF PALM BEACH  
I HEREBY CERTIFY that the plat shown hereon is a true and correct representation of a survey, made under my direction, of the above described property, and that said survey is accurate to the best of my knowledge and belief, and that permanent reference monuments (P.R.M.) have been placed as required by law.

Henry A. Brockway  
Registered Land Surveyor  
Florida Certificate No. 651

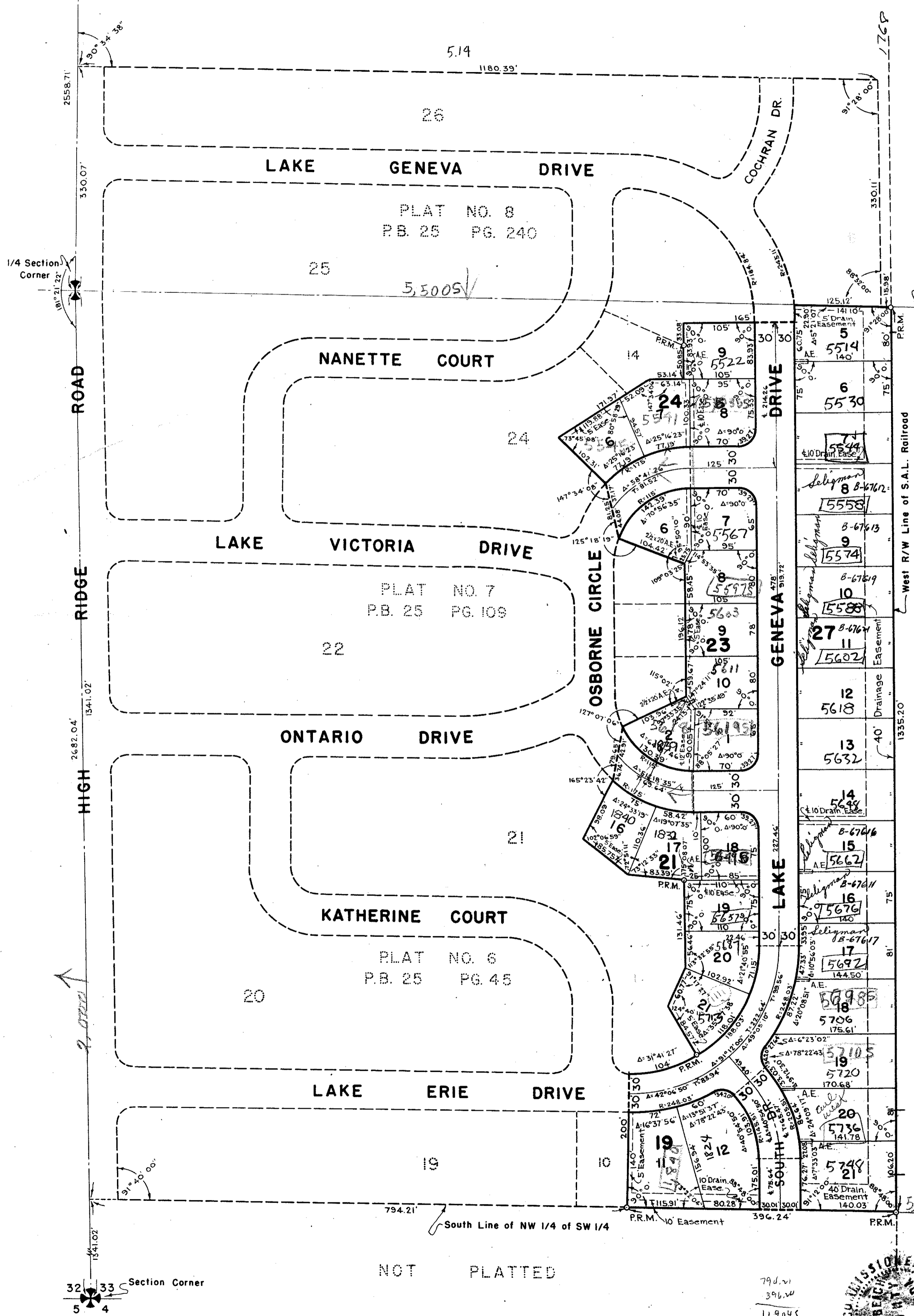
Subscribed and sworn to before me this 23<sup>rd</sup> day of September, A.D. 1959.

John J. Thomas  
Notary Public

My Commission expires: August 7, 1961

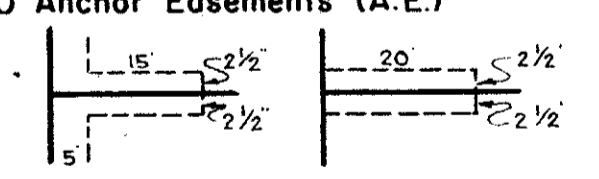
BROCKWAY, WEBER & BROCKWAY  
ENGINEERS  
WEST PALM BEACH, FLORIDA  
PLAT NO. 9 OF  
LAKE OSBORNE ESTATES

FILED IN OFFICE OF THE COUNTY CLERK, PALM BEACH COUNTY, FLORIDA  
DR. BY: M.G.B.  
SCAL: 1" = 100'  
PLG. No. 10  
3344143

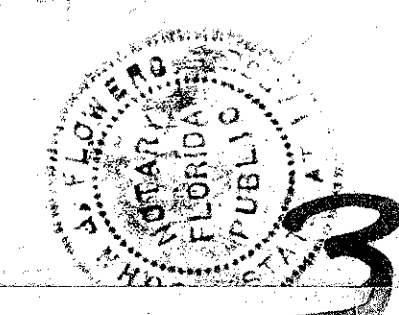
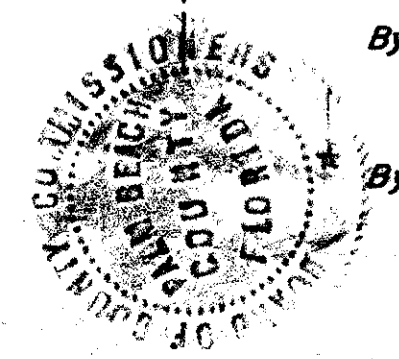


NOTE  
Building Setback Lines shall be as required by Palm Beach County Zoning Regulations.  
There shall be no buildings or other structures placed on Utility Easements.  
There shall be no buildings or any kind of construction, or trees or shrubs placed on Drainage Easements.

NOTE  
All Block Corners are rounded with a 25ft. radius curve unless otherwise noted.  
Easements are for Public Utilities, unless otherwise shown.  
5x20' Anchor Easements (A.E.)



Approved: October 12, 1959, A.D. 1959  
Board of County Commissioners  
By: Lou Lital Chairman  
By: Stephen Meadell County Engineer



Section Corner  
29 29  
32 33  
228.44  
2558.71  
350.07  
1/4 Section Corner  
18°21'32"  
2682.04  
1341.02  
Section Corner  
32 33  
5 4

NOT PLATTED